



Automation for a Changing World

Delta Machine Vision System DMV Series

Delta Machine Vision Solution.

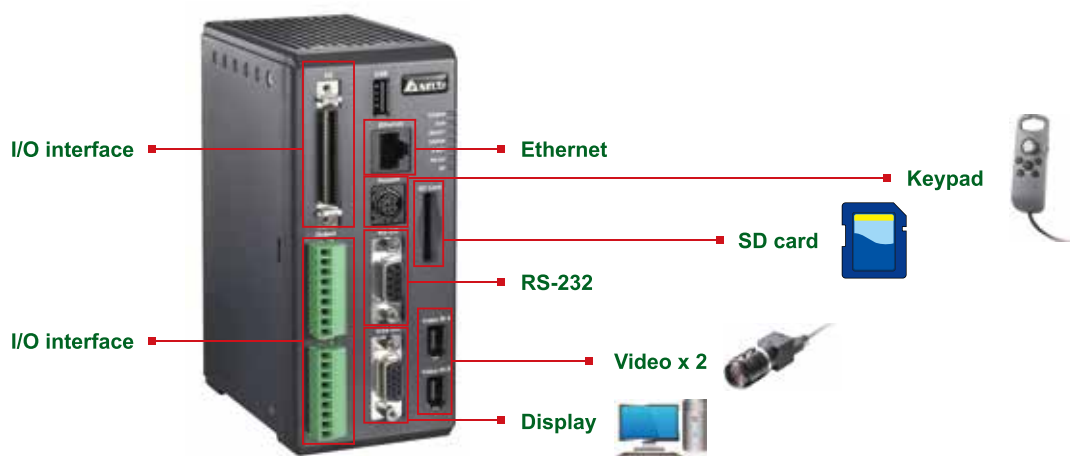
Intelligent Human Visual Inspection System for a Variety of Applications

DMV - Industrial Machine Vision System

Delta's DMV Series Machine Vision System provides a user-friendly interface that with just a few simple steps, can simulate the visual quality inspection process on a production line by capturing clear images of moving objects using an IEEE 1394 series high-speed digital camera. Detection, measuring, counting, identification, comparing, alignment, coordination and positioning take only one pass to fulfill the total inspection requirement for a variety of applications.

The DMV series is equipped with built-in camera flash control and dual cameras simultaneous control functions. The built-in camera flash is triggered at fixed times and operates synchronously with two cameras, which reduces the hardware cost spent on flash controllers and the machine vision system. It also supports Ethernet, serial communication and multiple I/O interfaces for rapid data transmission to a PLC and other kinds of host controllers. High speed, high precision and multi-processing capabilities make the DMV series an intelligent, user-friendly, and reliable machine vision system ideal for any automation system.

Part Names and Functions



- **I/O Interface 1:** Parallel I/O interface, one 9-pin European-type input terminal
- **I/O Interface 2:** Input/Output terminal blocks, one 9-pin output terminal block and one 50-pin mixed input/output terminal block
- **Ethernet:** Connects to PC for images transfer and process
- **Keypad:** Special keypad used to setup and operate with the DMV system
- **SD card:** Stores programs, parameters, records and images of the DMV system
- **RS-232:** Connects to Delta's PLC or other brands of controllers rapidly through standard RS-232 communication without complicated user-defined programs
- **Camera:** Connects to two standard 1394a cameras
- **Display:** Standard SVGA output interface







DMV System Features:

- ▶ Built-in multi-functional developing tools
- ▶ New user-friendly operation interface
- ▶ High specification hardware with performance better than comparable products
- ▶ Ethernet, RS-232 and RS-485 interfaces for data output
- ▶ Passes high industrial standards superior to PC-based systems
- ▶ Built-in camera flash control function
- ▶ Built-in PLC communication reduces program compilations
- ▶ Displays the images, inspection records and data in real time
- ▶ Provides a complete product line-up
- ▶ Supports SD card (16GB)
- ▶ Flowchart programming interface saves development time
- ▶ Versatile digital I/O interface
- ▶ Compact and light, saves wiring and space easily

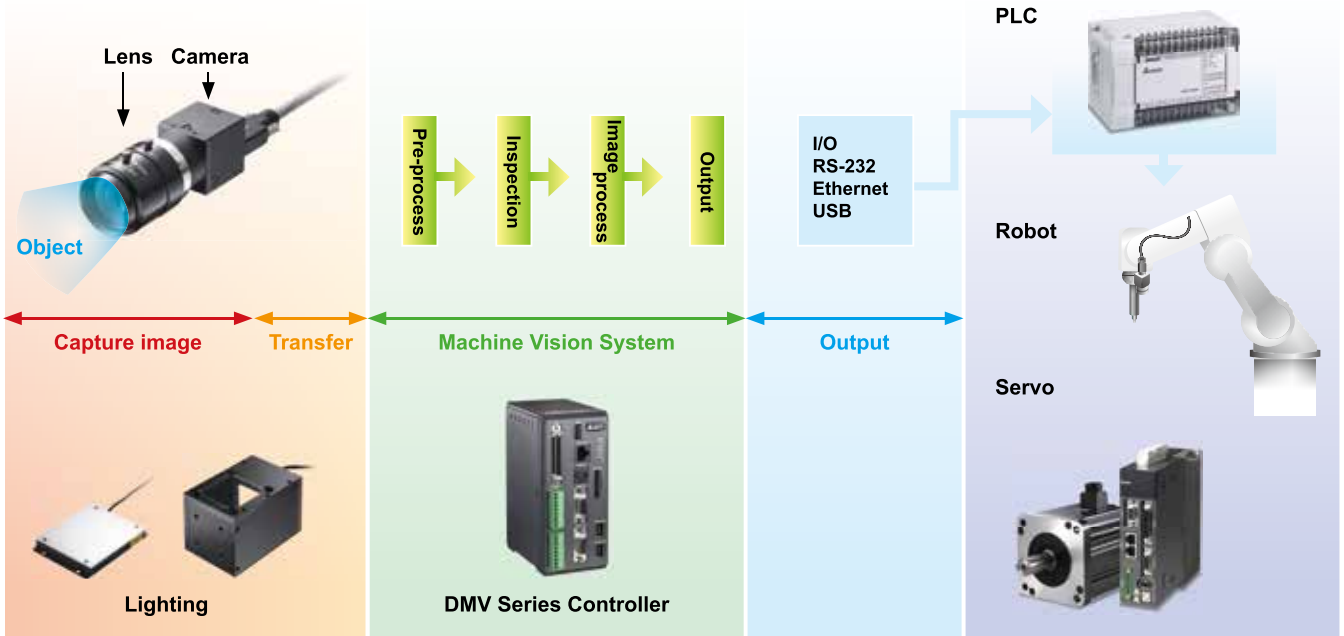
Controller and Optional Accessories

Controller	Keypad	Camera	Cable
			
DMV1000-80GX	DMV1000-KEY	DMV-CDA80GS (Grey scale, standard) DMV-CDA30GS (Grey scale, standard)	DMV-CA45 (4.5m standard)

Lighting			
			
DMV-PS12C1 DMV-PS12C2 DMV-CA30P	DMV-BL60R	DMV-CX40W	DMV-DR6736R DMV-DR6736M DMV-DR6736D

Specific Lenses for Industrial Cameras					
					
DMV-LN08M (focal length: 8mm, Mega-pixel)	DMV-LN12M (focal length: 12mm, Mega-pixel)	DMV-LN16M (focal length: 16mm, Mega-pixel)	DMV-LN25M (focal length: 25mm, Mega-pixel)	DMV-LN35M (focal length: 35mm, Mega-pixel)	DMV-LN50M (focal length: 50mm, Mega-pixel))

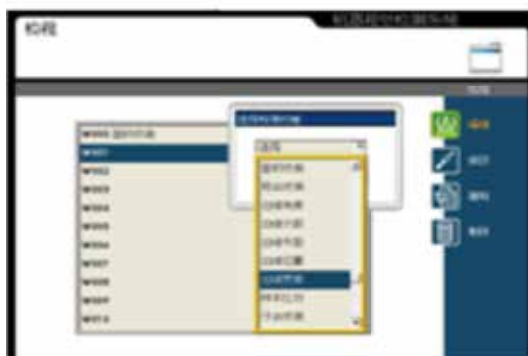
System Configuration



New User-Friendly Flowchart Interface

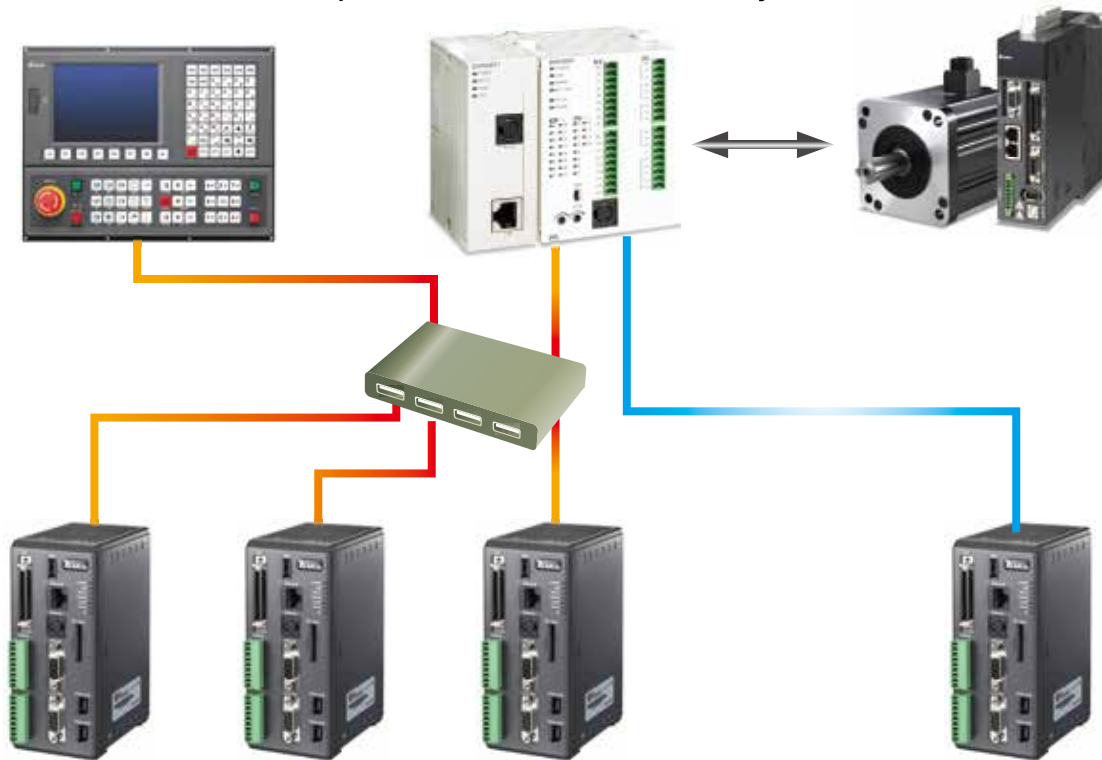
- ▶ Sets up camera related parameters
- ▶ Selects inspection mode
- ▶ Edits image processing results
- ▶ Sets output mode and content

Easy to Use!
Simple to Start!



Ethernet, RS-232 Communication Interfaces

Rapid Connection to External Control System.



“Goalkeeper” on Production Line

- ▶ **High Precision:** Provides high-resolution visual control for accurate and stable inspection
- ▶ **Continuity:** Replaces labor and provides uninterrupted service
- ▶ **Flexibility:** Offers convenient software setting for objects inspection
- ▶ **Repeatability:** Non-contact, no abrasion or damage

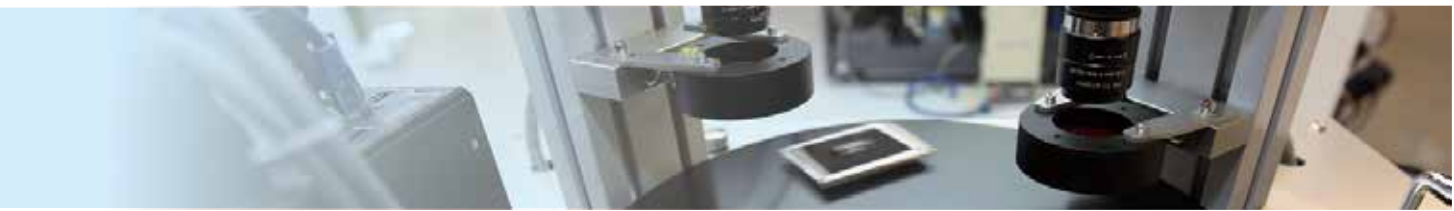
Improve quality, reduce RMA returns
Increase production capacity, lower labor costs





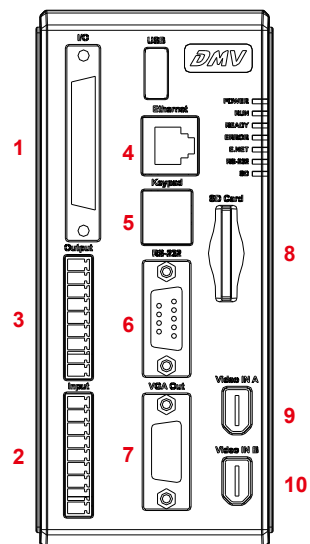
Specifications

General Specifications	<ul style="list-style-type: none"> ▶ Power supply: 24 VDC ▶ Operation voltage range: 21.6~26.4V ▶ Rated consumption current: 1A below ▶ Battery life: 5 years ▶ Vibration resistance: 10~55Hz 10m/s, 3-axis direction for 10min ▶ Impact resistance: max. 300m/s, 3-axis (6 directions), each 3 times 	<ul style="list-style-type: none"> ▶ Operation environment temperature: 0°C~+50°C ▶ Storage environment temperature: -20°C~+65°C ▶ Operation environment humidity: 35%~65% RH (No condensation) ▶ Operation height : under 2000 m
Camera	<ul style="list-style-type: none"> ▶ Model: IEEE 1394a digital gray scale ▶ Pixel: 640×480 (300,000-pixel) /60fps, 1024×768 (800,000-pixel) /30fps ▶ Qty: Max. 2 ▶ Shutter speed: 0.05ms~1s or user-defined (15 kinds of speeds) ▶ Interface: C mount 	
Project Number	▶ 32 memory addresses, 999 memory cards. (I/O, communication switch supported)	
Inspection Window	<ul style="list-style-type: none"> ▶ Qty: 128 /project ▶ Functions: Area, Edge position, Edge count, Edge width, Edge pitch, Edge angle, Samplecompare, Edge compare, Image intensity, Blots, Flaws, Edge tracking, Width tracking ▶ ROI type: Rectangle, Circle, Polygon, Ellipse, Ring, Sector, Rotating Rectangle ▶ Mask number: 4/inspection window 	
Preprocess	<ul style="list-style-type: none"> ▶ Setup: 6 types ▶ Type: Binary, Expand, Erosion, Averaging, Median, Sharpen, Laplacian, Sobelx, Sobely, Sobel, Prewitt, Roberts, Difference (total 13 types) 	
Execution Mode	▶ Execution , Non-execution , Conditional execution	
CP Numerical Calculation	<ul style="list-style-type: none"> ▶ Qty: 32 ▶ Four arithmetic operations: Plus, Subtract, Multiply, Divide ▶ Functions (14 types) : ABS, SQR, SQRT, MOD, POW, DIST, AVEG, MIN, MAX,LE, EQ, SIN, COS, TAN 	
Logistic Calculation	<ul style="list-style-type: none"> ▶ Qty: 32 ▶ Type: AND, OR, XOR, NOT 	
Communication Interface	▶ RS232 (Max.115200bps), USB2.0, Ethernet (10/100BASW-T), RS-485	
Display	<ul style="list-style-type: none"> ▶ Screen display: SVGA 800 × 600 output ▶ Display scale: 4%~999% adjustable ▶ Language: Traditional Chinese, Simple Chinese, English 	
Camera Flash Control	▶ Mode: I/O control, 2 lights independent setting	
Memory Card	▶ SD card	



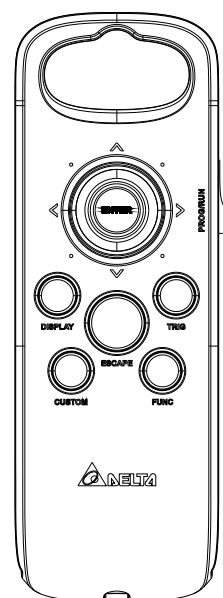
Controller Parts

NO.	Name	Description
1	Parallel I/O interface	Input/Output
2	Input terminal	Input
3	Output terminal	Output
4	Ethernet	10/100BASE-T communication
5	Keypad connector	Connect to keypad
6	RS-232 serial port	Supports Master, Slave serial communication
7	VGA output port	Connects to external VGA monitor made by other manufacturers
8	SD memory card	Stores the project settings and images backup
9	Camera 1 connector	Resolution: 1024×768 640×480
10	Camera 2 connector	Resolution: 1024×768 640×480



Keypad Parts

NO.	Name	Description
1	Move and Enter	8 directions selectable and enter setting
2	PROG/RUN	Switches between programming mode and run mode
3	TRIGGER	Inspection trigger
4	FUNC	Selects different modes during RUN operation
5	DISPLAY	Switches screen between camera1 and camera 2
6	CUSTOM	Image preprocessing select
7	ESCAPE	Exit key

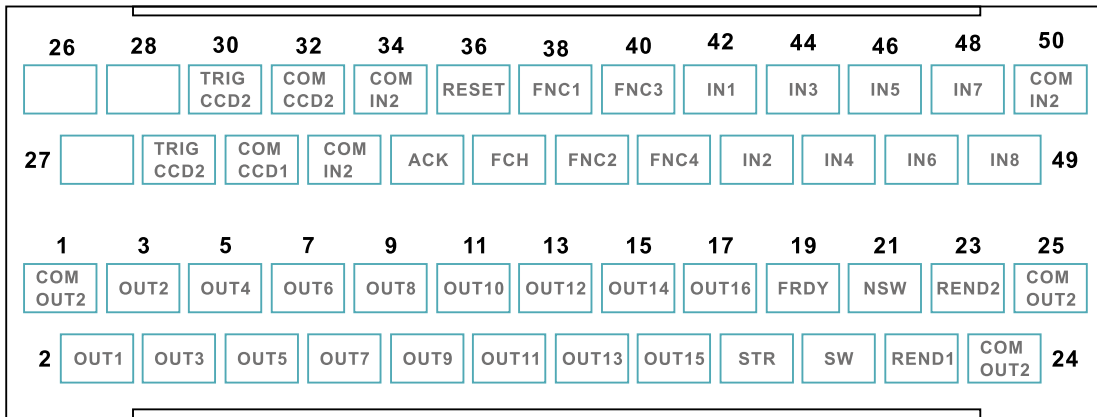


Built-in Multi-Functional Vision Development Tools

- ▶ Area measuring
- ▶ Detection of edge position, distance, counter, angle
- ▶ Flaw and blob detection
- ▶ Shape Finder
- ▶ Coordinate and angle calculation
- ▶ Edge and image tracing measurement



50-Pin I/O Mixed Terminal



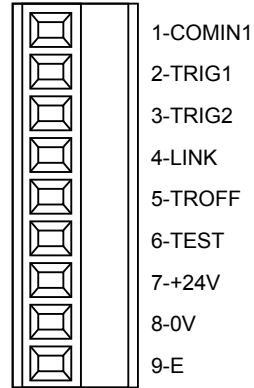
Signal Identification for Wiring

Pin	Name	Description	Status
1	COMOUT2	50 pin output COM	Output
2	OUT1	Parallel output 1	Output
3	OUT2	Parallel output 2	Output
4	OUT3	Parallel output 3	Output
5	OUT4	Parallel output 4	Output
6	OUT5	Parallel output 5	Output
7	OUT6	Parallel output 6	Output
8	OUT7	Parallel output 7	Output
9	OUT8	Parallel output 8	Output
10	OUT9	Parallel output 9	Output
11	OUT10	Parallel output 10	Output
12	OUT11	Parallel output 11	Output
13	OUT12	Parallel output 12	Output
14	OUT13	Parallel output 13	Output
15	OUT14	Parallel output 14	Output
16	OUT15	Parallel output 15	Output
17	OUT16	Parallel output 16	Output
18	STR	Parallel output handshaking sign	Output
19	FRDY	Enable function switch sign	Output
20	SW	Success function switch sign	Output
21	NSW	Fail function switch sign	Output
22	REND1	Camera 1 capture image	Output
23	REND2	Camera 2 capture image	Output
24	COMOUT2	50 pin output COM	Output
25	COMOUT2	50 pin output COM	Output

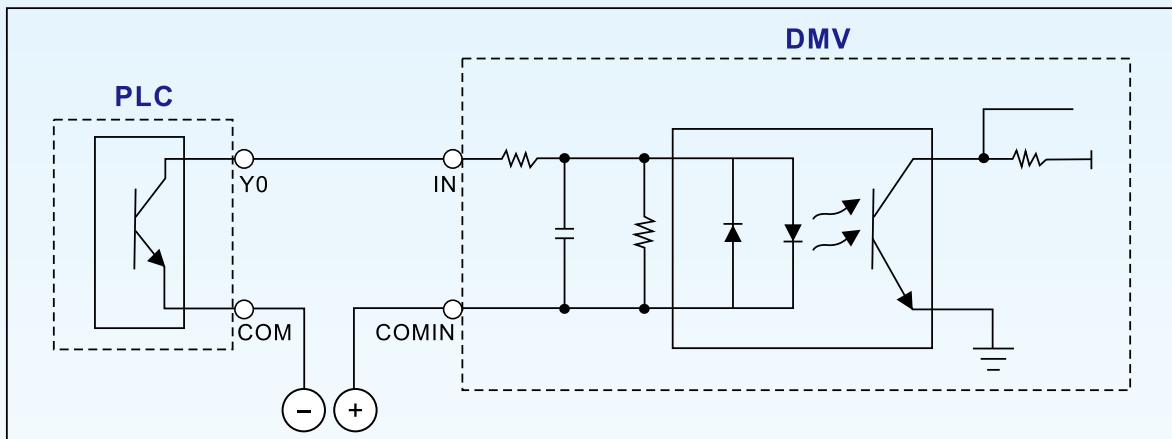
Pin	Name	Description	Status
26		No use	---
27		No use	---
28		No use	---
29	TRIGCCD1	Camera 1 image capture internal trigger	Internal
30	TRIGCCD2	Camera 2 image capture internal trigger	Internal
31	COMCCD1	TRIGCCD 1 specific COM	Internal
32	COMCCD2	TRIGCCD 1 specific COM	Internal
33	COMIN2	50 pin input COM	Input
34	COMIN2	50 pin input COM	Input
35	ACK	Parallel output handshaking sign	Input
36	RESET	System reset	Input
37	FCH	Function select start trigger	Input
38	FNC1	Function 1	Input
39	FNC2	Function 2	Input
40	FNC3	Function 3	Input
41	FNC4	Function 4	Input
42	IN1	Input 1	Input
43	IN2	Input 2	Input
44	IN3	Input 3	Input
45	IN4	Input 4	Input
46	IN5	Input 5	Input
47	IN6	Input 6	Input
48	IN7	Input 7	Input
49	IN8	Input 8	Input
50	COMIN2	50 pin input COM	Input

9-Pin Input Terminal Block

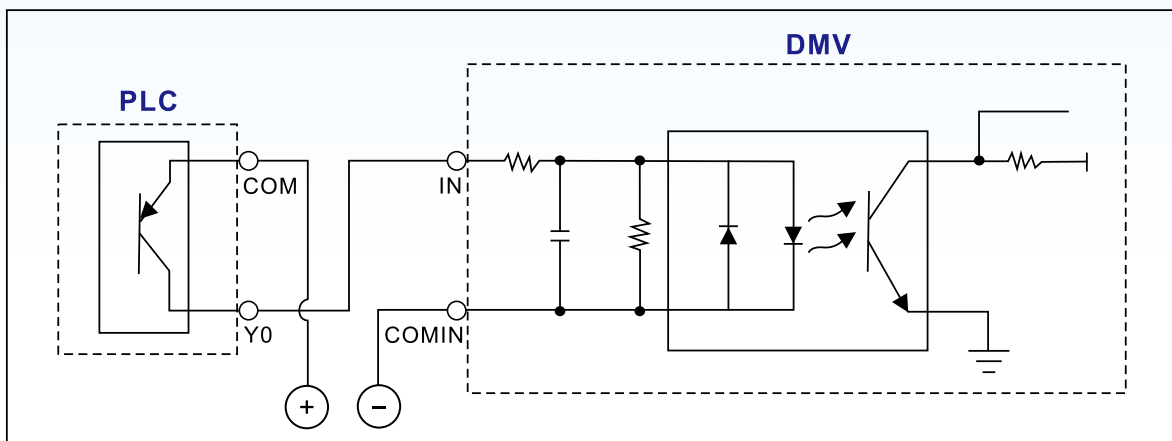
NO.	Name	Description
1	COMIN1	9 pin input COM
2	TRIG1	Camera 1 image capture trigger
3	TRIG2	Camera 2 image capture trigger
4	LINK	PLC communication link start sign
5	TROFF	Disable image capture trigger
6	TEST	Test condition (no data output)
7	+24V	Power positive input
8	0V	Power negative input
9	E	Grounding



Input Circuit (NPN)

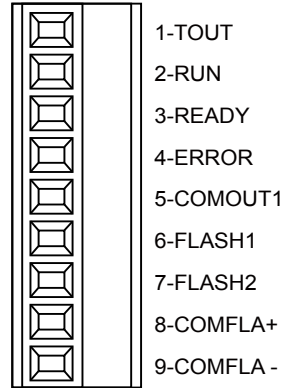


Input Circuit (PNP)

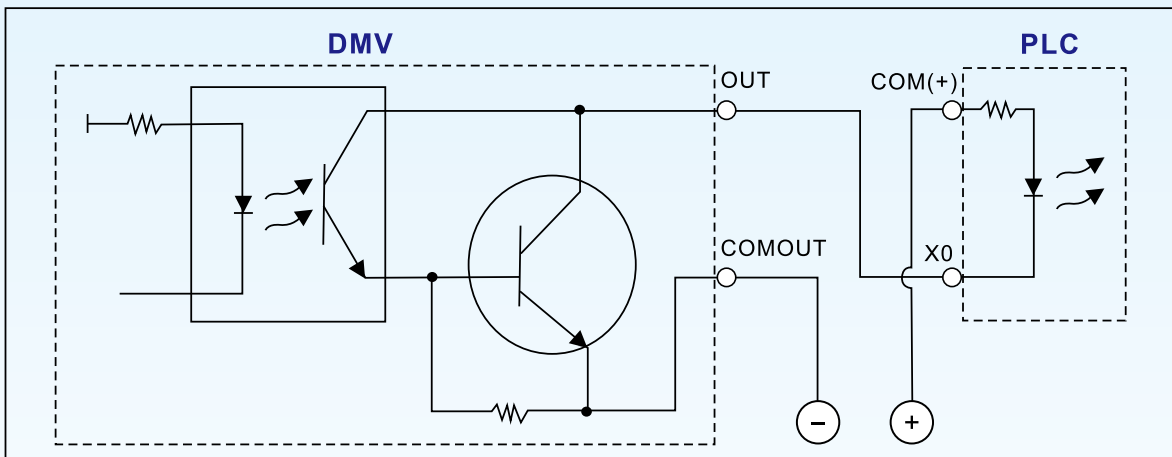


9-Pin Output Terminal Block

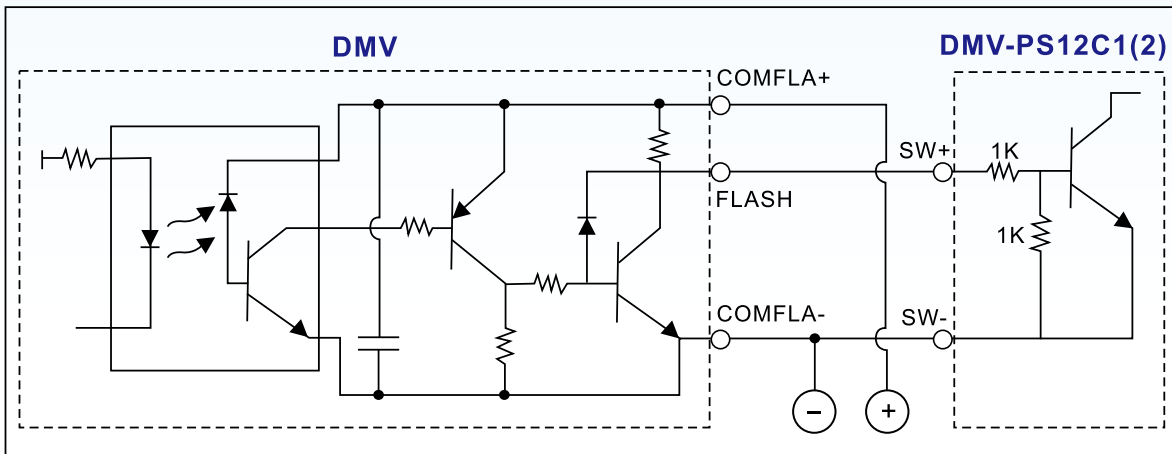
NO.	Name	Description
1	TOUT	Final result output
2	RUN	RUN status indication
3	READY	Controller is ready for outputting the required images
4	ERROR	Error indication
5	COMOUT1	9 pin output COM
6	FLASH1	Camera 1 Flash output
7	FLASH2	Camera 2 Flash output
8	COMFLA+	Flash output positive COM
9	COMFLA-	Flash output negative COM



Output Circuit (NPN output)(FLASH1 and FLASH2 exclusive)



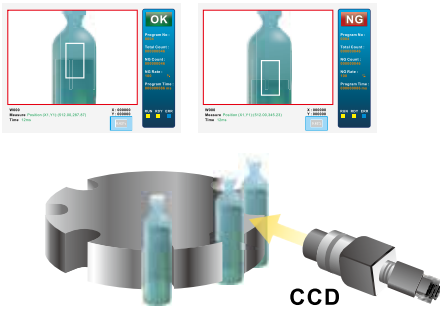
FLASH 1&2 Output Circuit (NPN output)



Applications

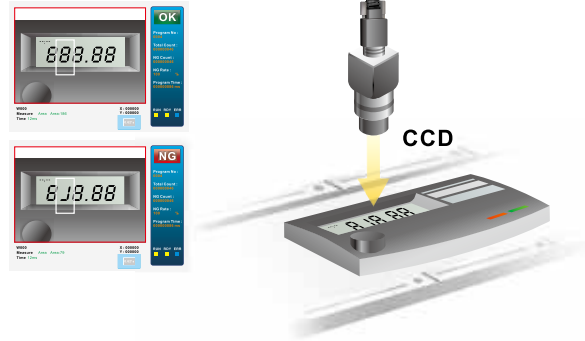
Beverage Packing Inspection

Inspects the liquid level of each bottle



Character Inspection

Inspects the characters on electronic devices



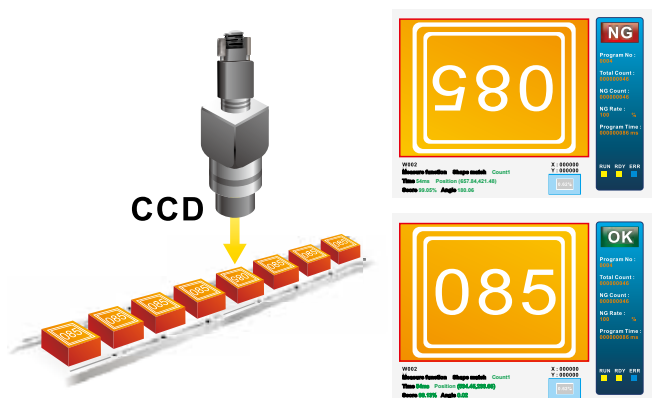
Bottle Cap Position Identification

Identifies the bottle capping position



Direction Identification

Inspects the direction of work pieces conveyed on a production line



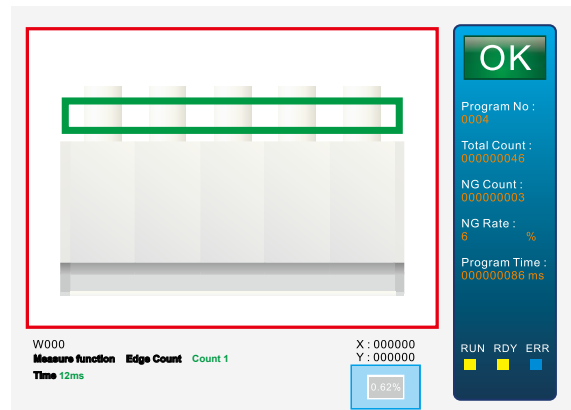
Positioning

Positionings control integrated with robot



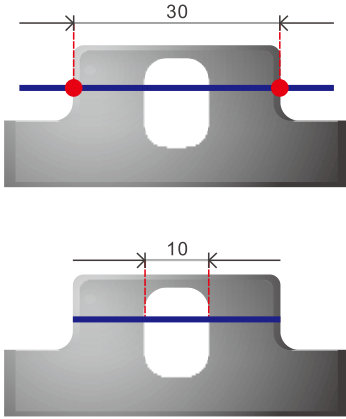
Pin Number Counting

Counts connector pin numbers automatically. Count connector pin numbers automatically



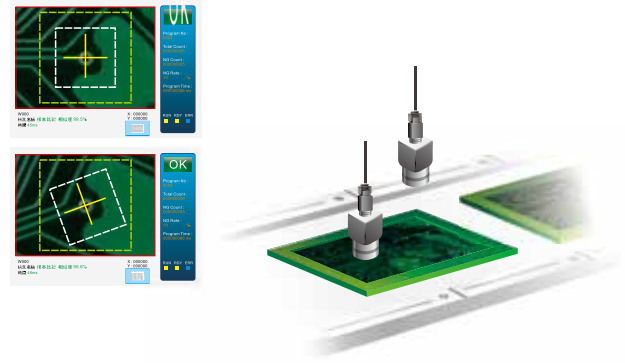
Dimensions Measurement

Measures the dimensions of components automatically.



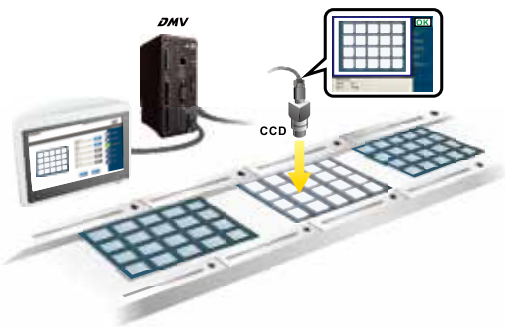
Alignment System

Aligns the positions of PCB and TFT panels automatically



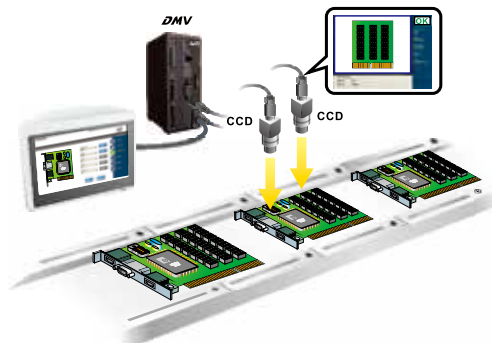
Luminance Inspection

Inspects LED luminance automatically



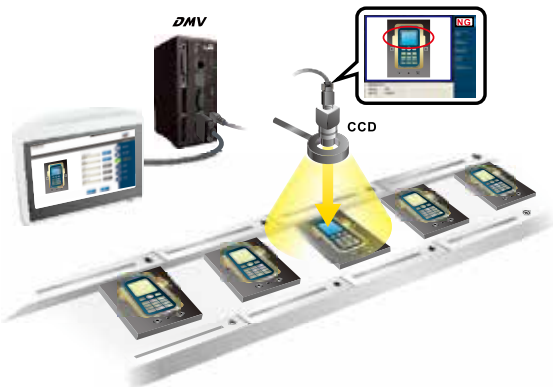
Position Identification

Inspects the position of IC components on PCB boards



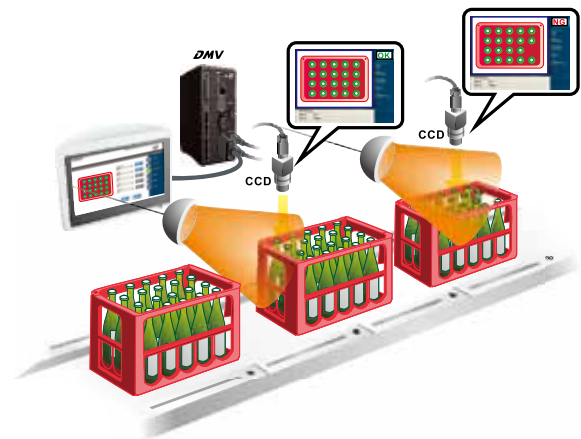
Module Inspection

Inspects the normality of mobile phone modules, such as touchscreens and push buttons



Object Counting

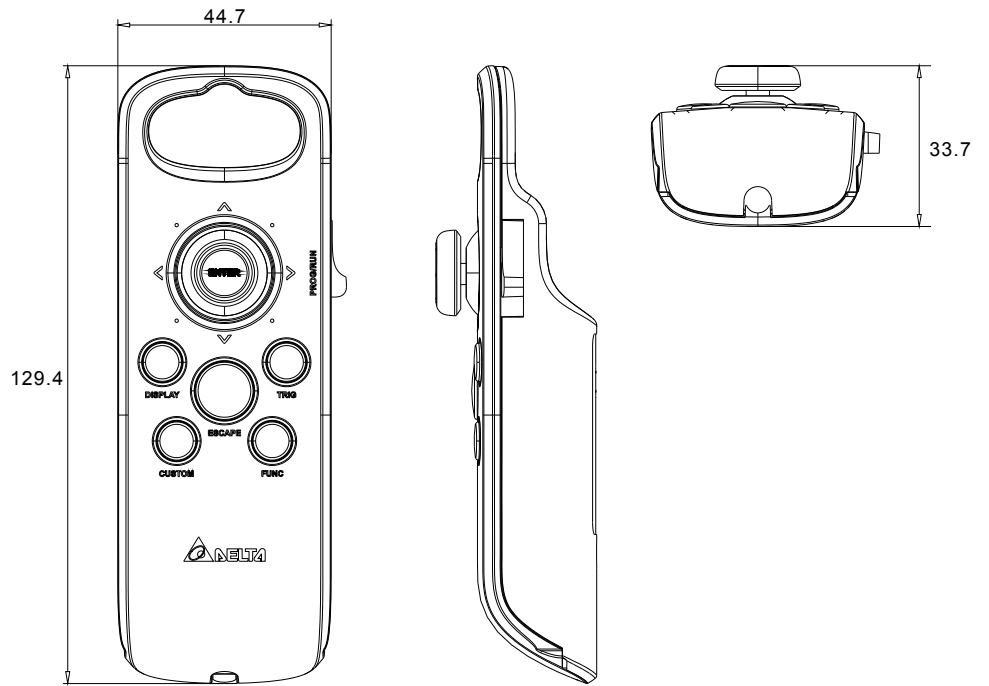
Counts the quantity of objects in a basket or carton





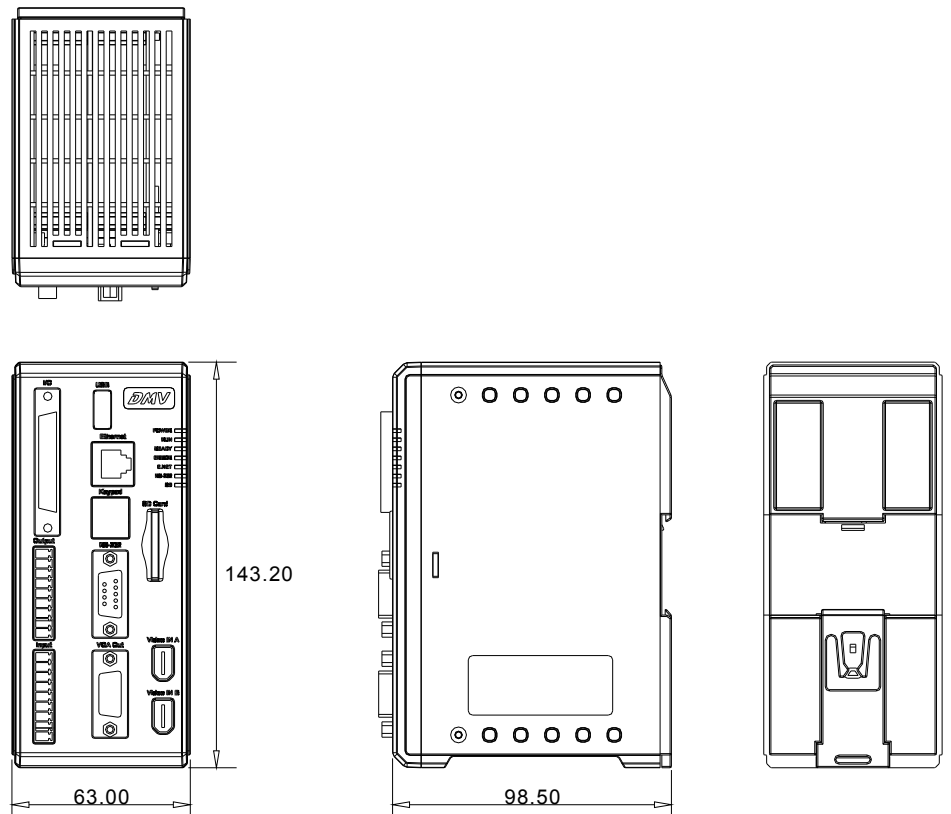
Keypad Dimensions

Unit : mm

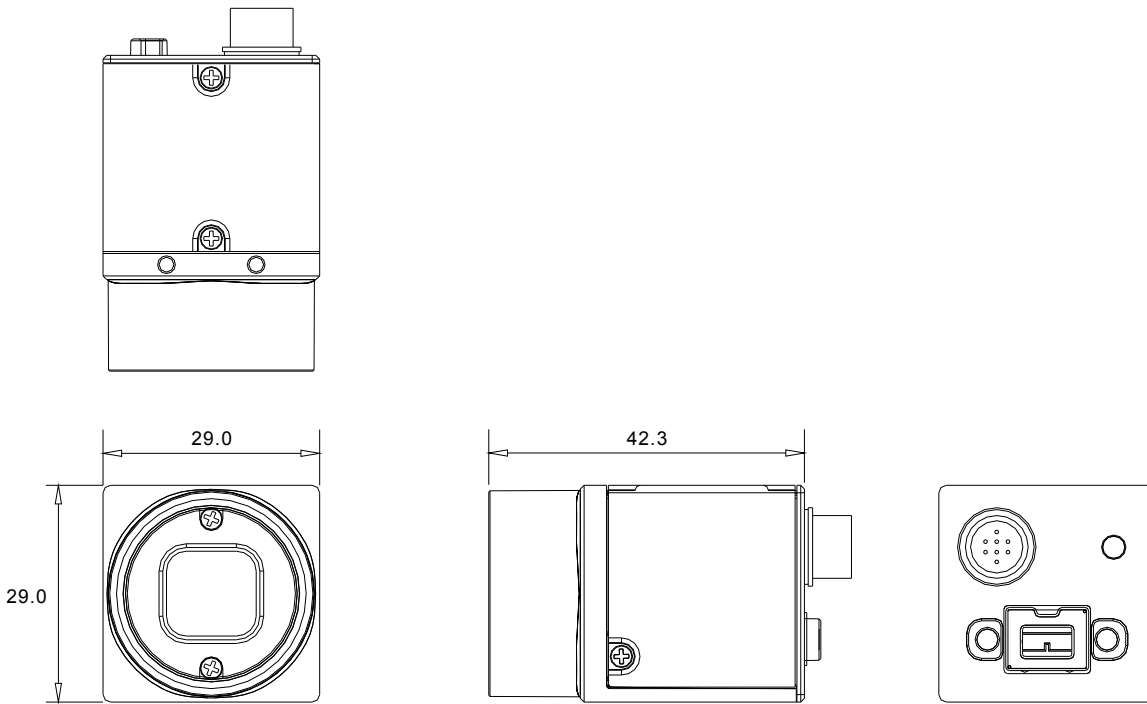


Controller Dimensions

Unit : mm



Camera Dimensions Unit : mm



Ordering Information

DMV System	<p>DMV1000-80GX (Controller,Keyboard, a 800,000-pixel camera and 4.5m cableincluded)</p> <p>DMV1000-30GX (Controller,Keyboard, a 300,000-pixel camera and 4.5m cable included)</p>	
Image Process Controller	DMV-80GXC	
Keypad	DMV1000-KEY	
CCD	<p>1/3 inch, 800,000 pixel, monochrome camera</p> <ul style="list-style-type: none"> ■ DMV-CDA80GS (a 800,000-pixel camera and CCD cable included) ■ DMV-CDA30GS (a 300,000-pixel camera and CCD cable included) ■ 4.5m 1394b Cable DMV-CA45 (4.5m standard) ■ 1m 1394b Trigger Cable DMV-CA10T (1m) 	
Lens	<ul style="list-style-type: none"> ■ Mega pixels, focal point: 8,12,16,25,35,50 DMV-LN08M (focal point: 8mm, Mega-pixel) DMV-LN12M (focal point: 12mm, Mega-pixel) DMV-LN16M (focal point: 16mm, Mega-pixel) DMV-LN25M (focal point: 25mm, Mega-pixel) DMV-LN35M (focal point: 35mm, Mega-pixel) DMV-LN50M (focal point: 50mm, Mega-pixel) ■ Telecentric lens DMV-LN50T (Telecentric) 	
Illumination	<ul style="list-style-type: none"> ■ Coaxial DMV-CX40W (Coaxial white light) ■ Direct Ring DMV-DR6736R (Direct Ring) DMV-DR6736W Diffusion board: DMV-DR6736D (Diffusion) ■ Back light DMV-BL60R (Back Light) ■ Power supply DMV-PS12C1 (Power Supply) DMV-PS12C2 DMV-CA30P 	



Smarter. Greener. Together.

Industrial Automation Headquarters

Delta Electronics, Inc.

Taoyuan Technology Center
18 Xinglong Road, Taoyuan District,
Taoyuan City 33068, Taiwan (R.O.C.)
TEL: 886-3-362-6301 / FAX: 886-3-371-6301

Asia

Delta Electronics (Jiangsu) Ltd.

Wujiang Plant 3
1688 Jiangxing East Road,
Wujiang Economic Development Zone
Wujiang City, Jiang Su Province, P.R.C. 215200
TEL: 86-512-6340-3008 / FAX: 86-769-6340-7290

Delta Greentech (China) Co., Ltd.

238 Min-Xia Road, Pudong District,
ShangHai, P.R.C. 201209
TEL: 86-21-58635678 / FAX: 86-21-58630003

Delta Electronics (Japan), Inc.

Tokyo Office
2-1-14 Minato-ku Shibadaimon,
Tokyo 105-0012, Japan
TEL: 81-3-5733-1111 / FAX: 81-3-5733-1211

Delta Electronics (Korea), Inc.

1511, Byucksan Digital Valley 6-cha, Gasan-dong,
Geumcheon-gu, Seoul, Korea, 153-704
TEL: 82-2-515-5303 / FAX: 82-2-515-5302

Delta Electronics Int'l (S) Pte Ltd.

4 Kaki Bukit Ave 1, #05-05, Singapore 417939
TEL: 65-6747-5155 / FAX: 65-6744-9228

Delta Electronics (India) Pvt. Ltd.

Plot No 43 Sector 35, HSIIDC
Gurgaon, PIN 122001, Haryana, India
TEL : 91-124-4874900 / FAX : 91-124-4874945

Americas

Delta Products Corporation (USA)

Raleigh Office
P.O. Box 12173, 5101 Davis Drive,
Research Triangle Park, NC 27709, U.S.A.
TEL: 1-919-767-3800 / FAX: 1-919-767-8080

Delta Greentech (Brasil) S.A.

Sao Paulo Office
Rua Itapeva, 26 - 3° andar Edificio Itapeva One-Bela Vista
01332-000-São Paulo-SP-Brazil
TEL: 55 11 3568-3855 / FAX: 55 11 3568-3865

Europe

Deltronics (The Netherlands) B.V.

Eindhoven Office
De Witbogt 20, 5652 AG Eindhoven, The Netherlands
TEL: 31-40-2592850 / FAX: 31-40-2592851

*We reserve the right to change the information in this catalogue without prior notice.